

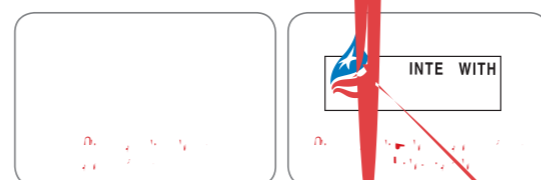


2012

CHINA NATIONAL BUILDING MATERIALS GROUP CORPORATION
Social Responsibility Report

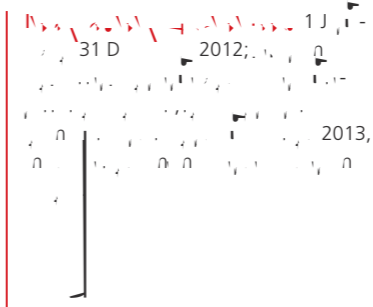
CHINA NATIONAL BUILDING MATERIALS GROUP CORPORATION

China National Building Materials Group Corporation



IV. N

... CNBM ... MB ...

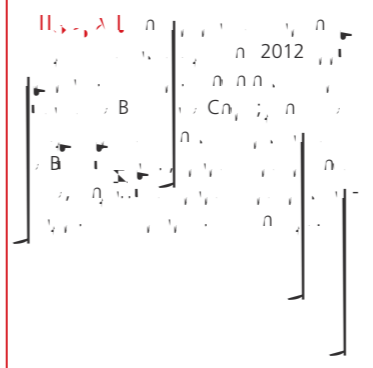


... A

... CNBM ... MB ...

... (2006) ... G ... (I ● 26000) ... G ... A ... C ... G ... (CA - C 2.0) ... A

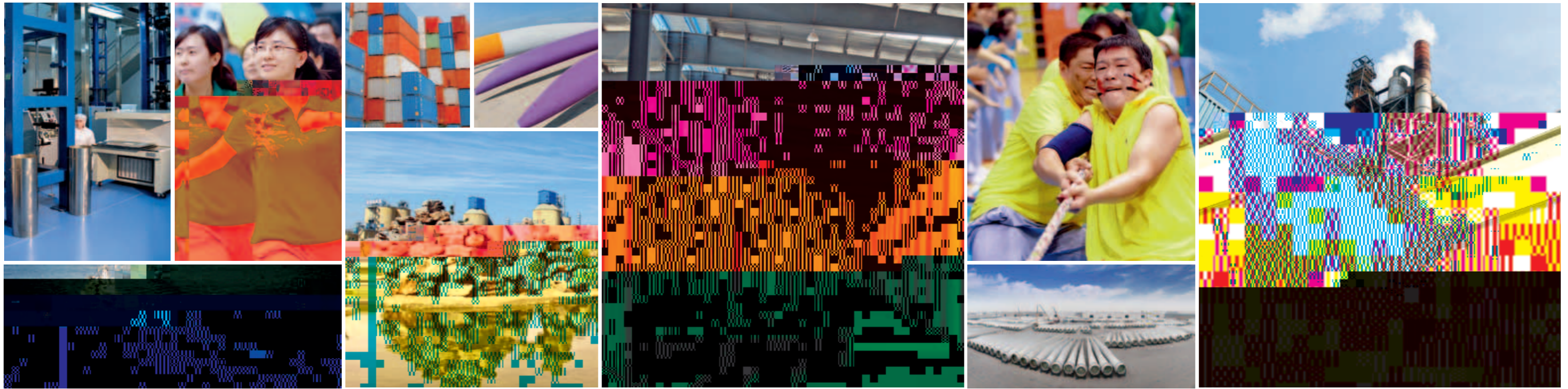
9. ... A ... CNBM ... MB



... /EN/

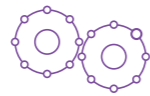






Contents

Corporate Information	02
Chairman's Message	04
General Manager's Message	06
Chairman's Message	07
General Manager's Message	10
Business Strategy	10
Annual Report	11
	80
Key Performance Indicators	82
Investment and Financial Performance	92
Investment and Financial Performance	94
	95
Financial Performance	97



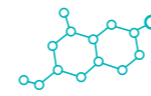
Resilience and Management

Chairman's Message	14
General Manager's Message	16
Business Strategy	18
Annual Report	19
Investment and Financial Performance	20
Key Performance Indicators	22
Investment and Financial Performance	23



Making Performance

Chairman's Message	26
General Manager's Message	27
Business Strategy	28
Annual Report	30
Investment and Financial Performance	31
Key Performance Indicators	32
Investment and Financial Performance	33



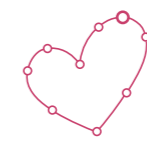
Technical Innovation

Chairman's Message	36
General Manager's Message	40
Business Strategy	42
Annual Report	44
Investment and Financial Performance	46



Energy Saving & Environmental Protection

Chairman's Message	50
General Manager's Message	52
Business Strategy	54
Annual Report	56
Investment and Financial Performance	57
Key Performance Indicators	58
Investment and Financial Performance	60
Investment and Financial Performance	61



Employee Care

Chairman's Message	64
General Manager's Message	65
Business Strategy	66
Annual Report	70
Investment and Financial Performance	71



Corporate Citizenship

Chairman's Message	74
General Manager's Message	76
Business Strategy	77
Annual Report	78
Investment and Financial Performance	79



Chairman of CNBM

China National Building Materials

2012 CNBM. I
 A AC)
 C E M
 MB217.4 MB11.2
 CNBM
 C N A
 CNBM
 G
 G
 G 500
 A Cn

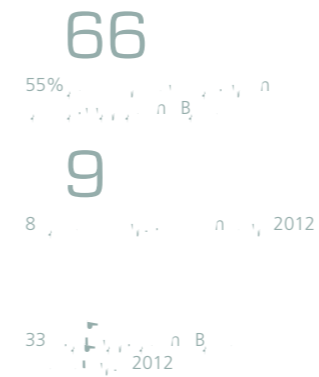
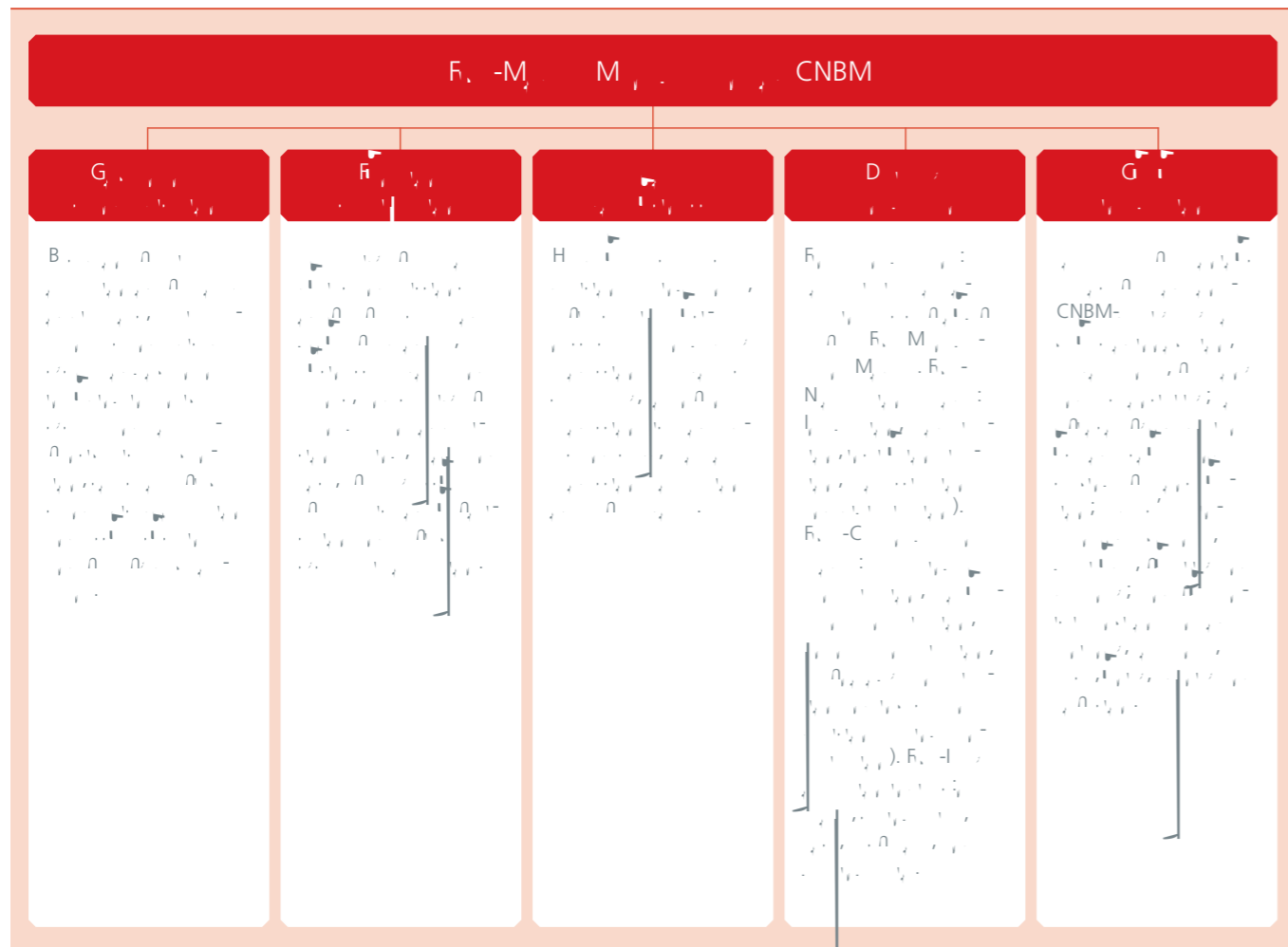
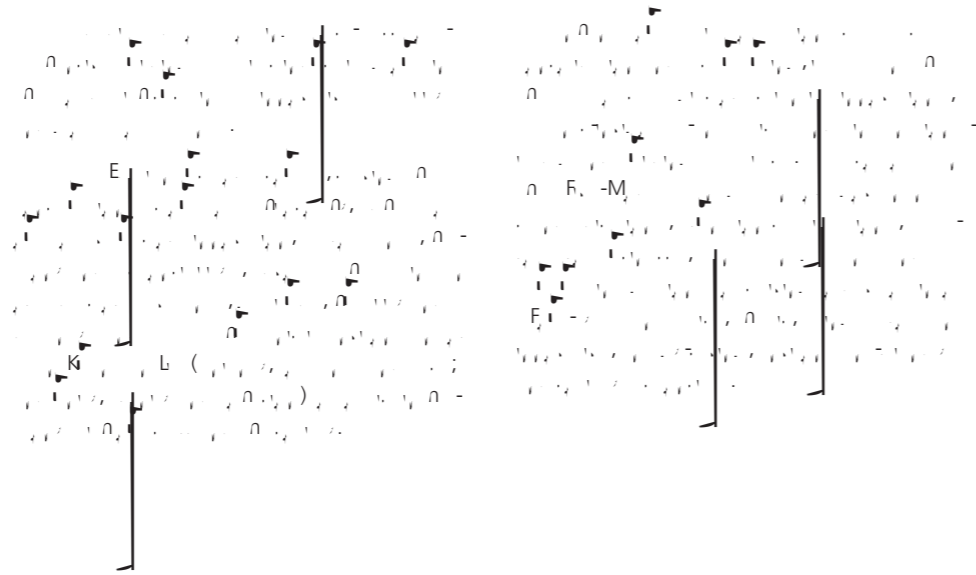
G
 Cn
 14 9
 Cn
 C M n E C D
 C C
 I 2012,
 D B 3 C G
 n 4 n&D
 C n D
 M E Cn
 G
 30
 60%

1,400 M
 2012 n 97
 G
 90%
 I 2012, n G
 n 40,000
 C
 D
 CNBM

Cn D

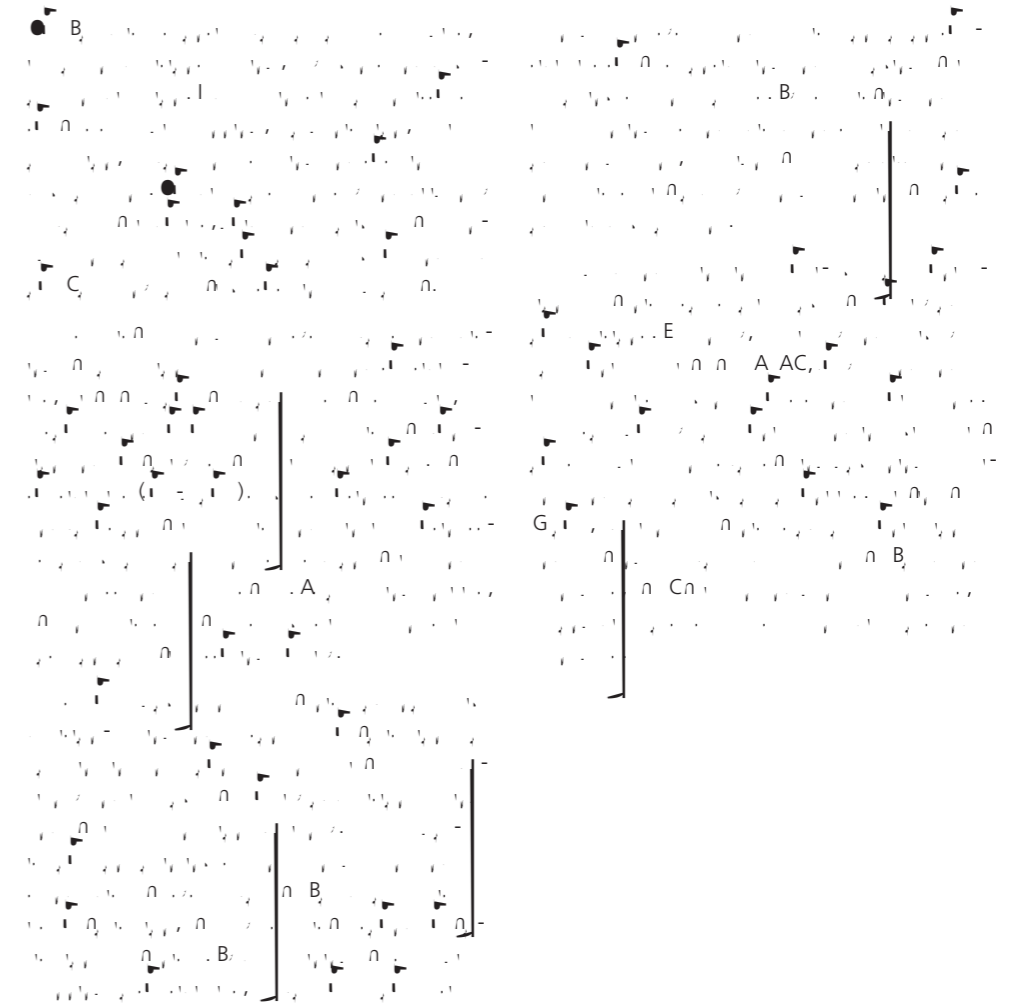
C_1





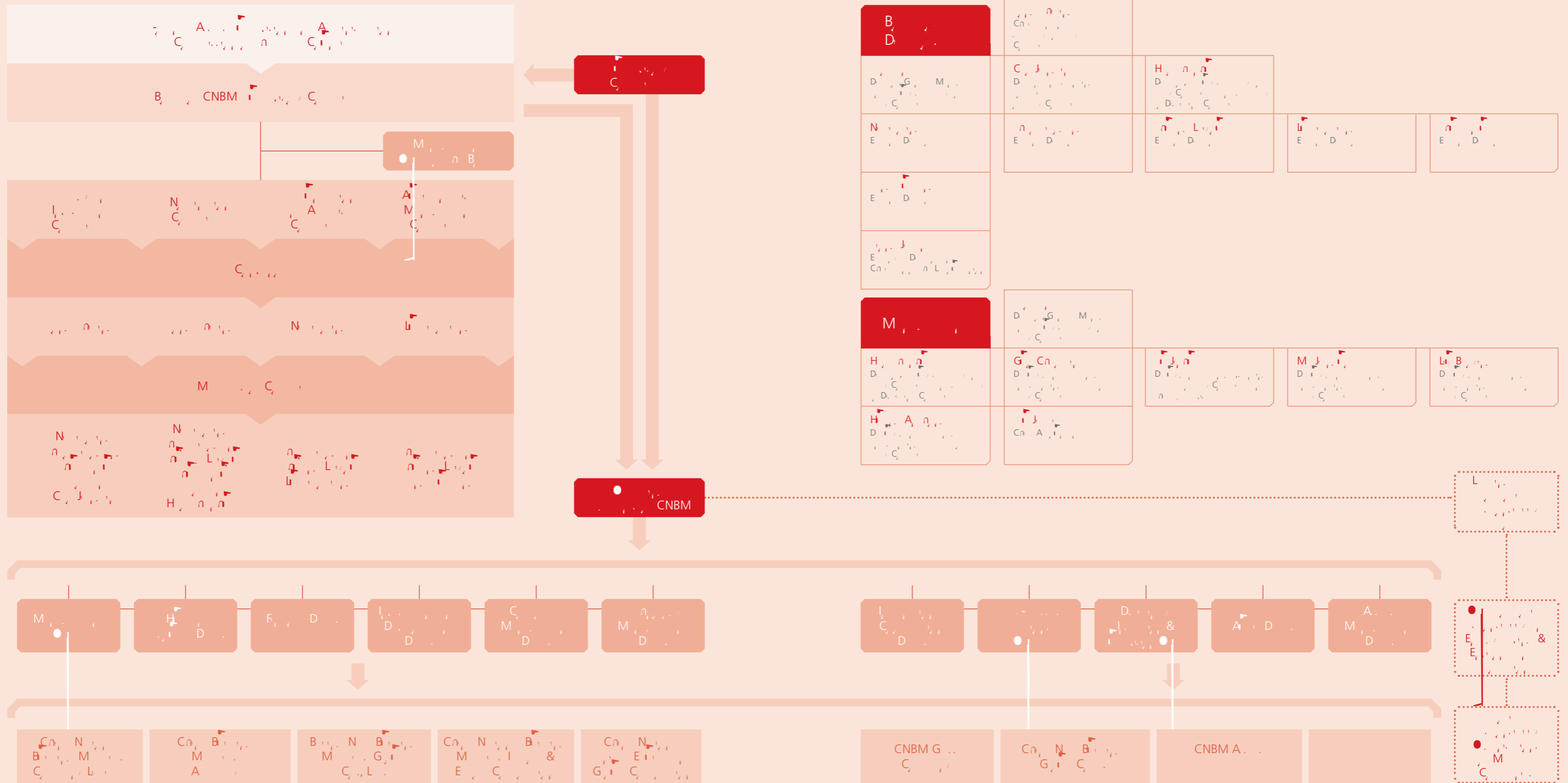
**Comments from External Parties:
State-owned Assets Supervision
and Administration Commission
of the State Council:**

The Board of CNBM conscientiously discharges its duties, prudently regulates its decisions and plays an important role in determining the direction of corporate development. The operation of the Board is satisfactory, it achieves stable re-election with its organisational structure further optimised. The work done by the Board of CNBM in refining the systems, strategic leadership, risk prevention, critical decision and appraisal to managers and remuneration management is highly effective.

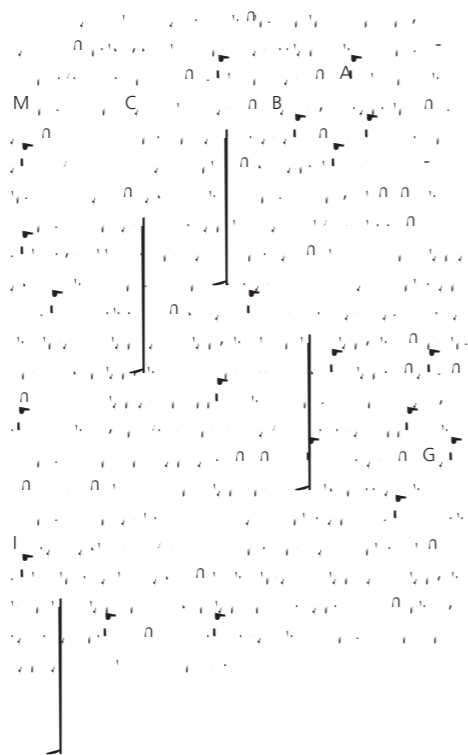


C, G, CNBM

M

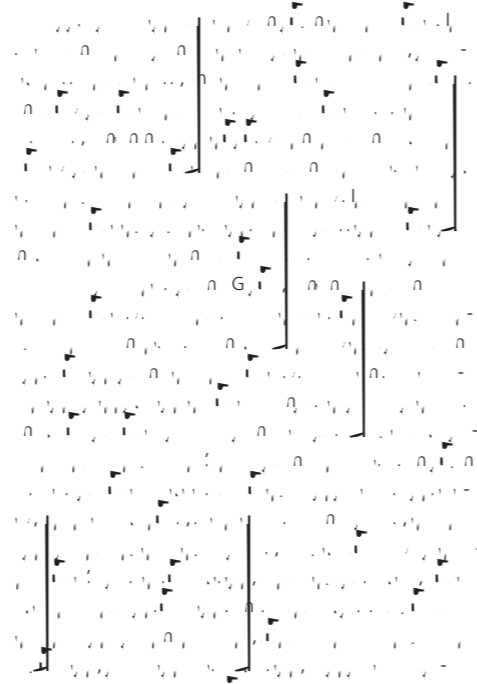
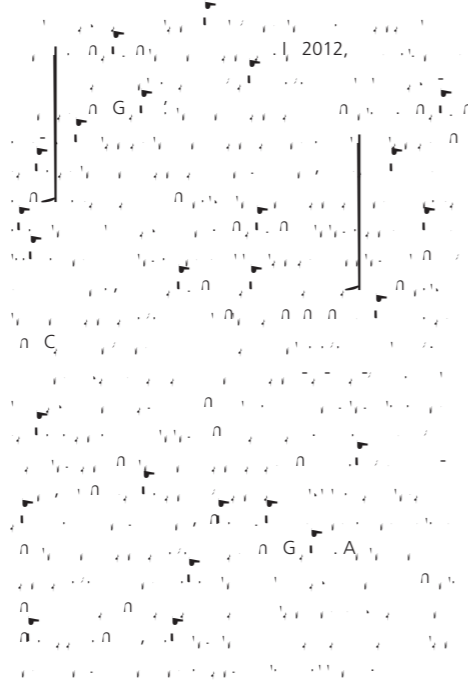


2
100%
2012
55
44
2012



2,936
318
9,561
169
6,075
1,045
3,481
368

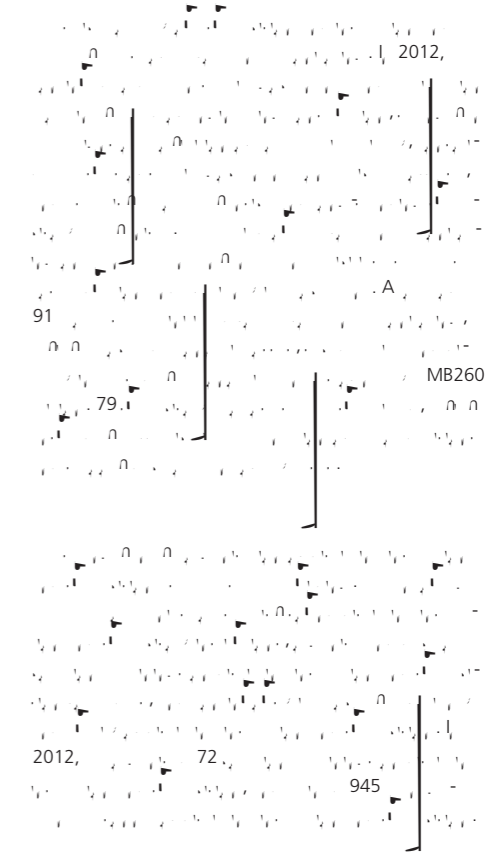
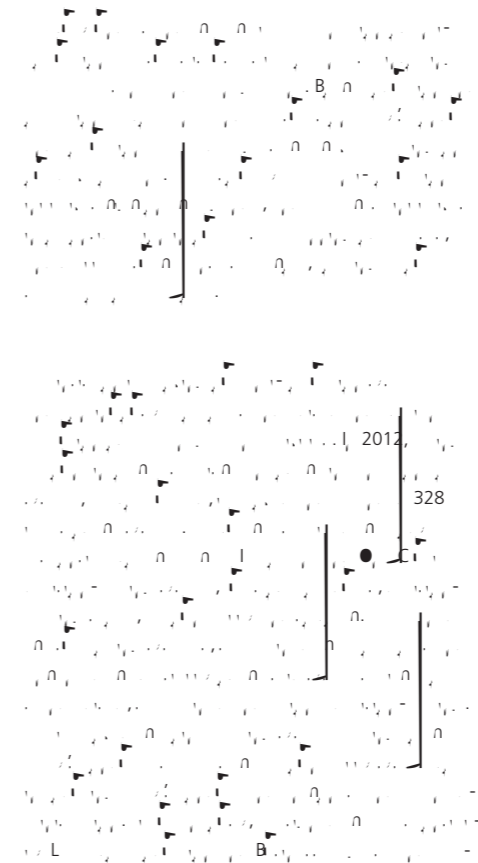
082
971
2012



02
91
2012

Sun Xingmou, Deputy Director of Supervisory Bureau of Disciplinary Committee of the State-owned Assets Supervision and Administration Commission of the State Council

While emphasizing on production and operation, CNBM has attached great importance to the construction of party's conduct as well as the work of anti-corruption and integrity advocacy. It earnestly implemented the accountability system of party's conduct and anti-corruption, further promoted the establishment of a punishment and prevention system, strengthened education, improved the "Three Important and One Crucial" decision-making system, enhanced supervision and inspection as well as performance monitoring, and reinforced the discipline inspection team building. All these measures safeguarded the stability of CNBM's reform and development.



1990-2012

1990-2012

1990-2012

1990-2012

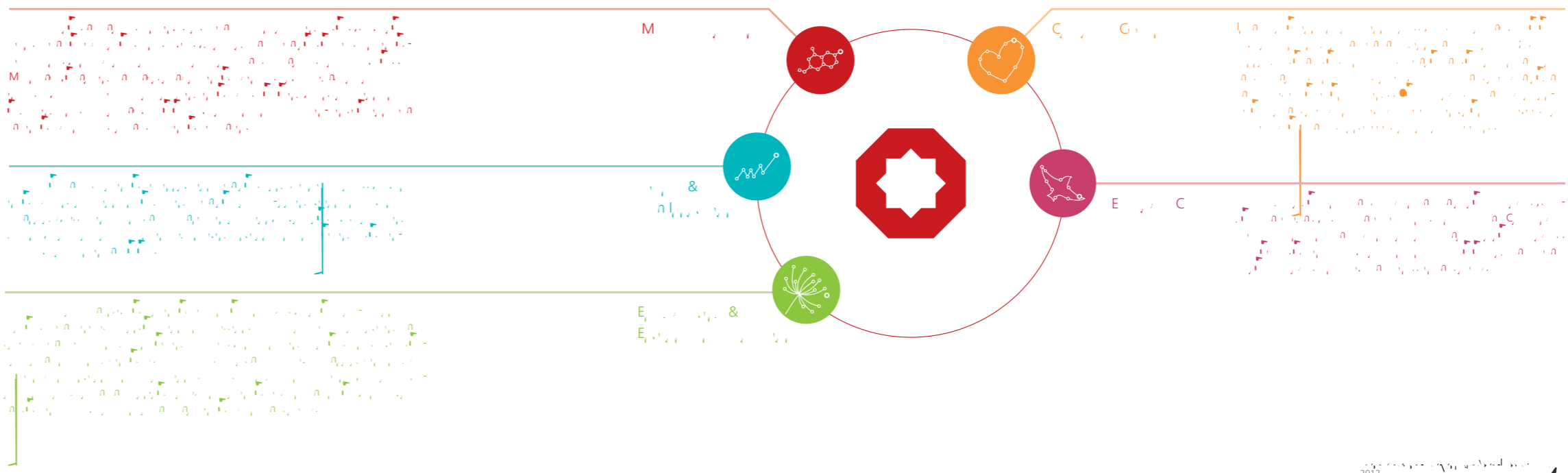
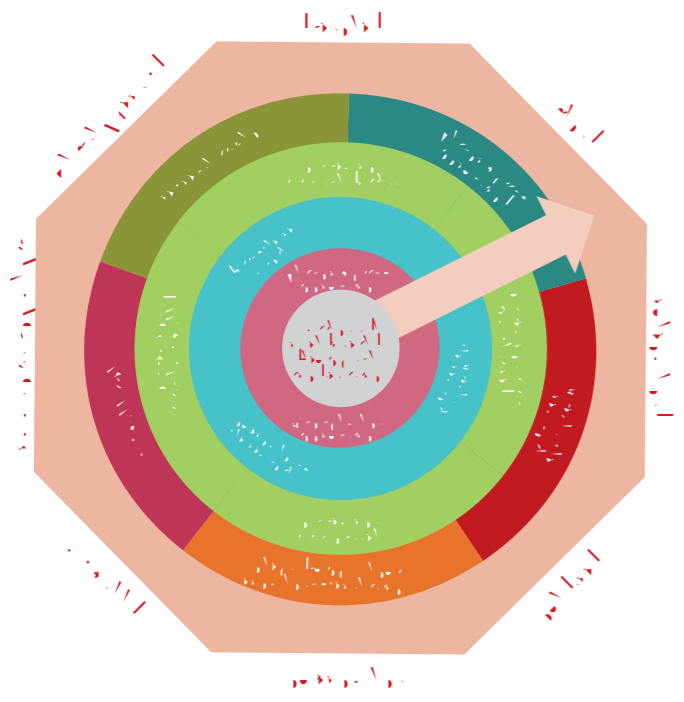
1990-2012

1990-2012

1990-2012

1990-2012

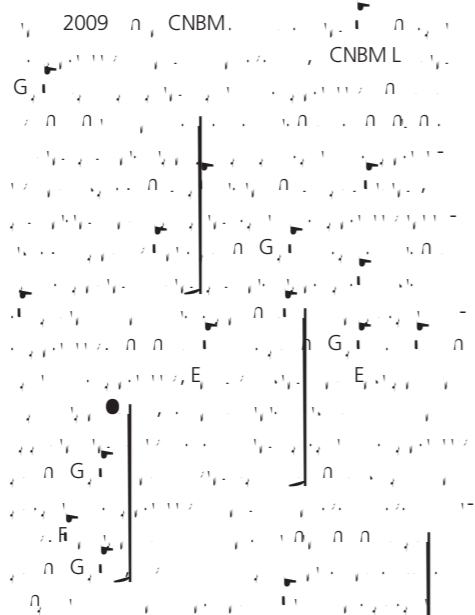
1990-2012



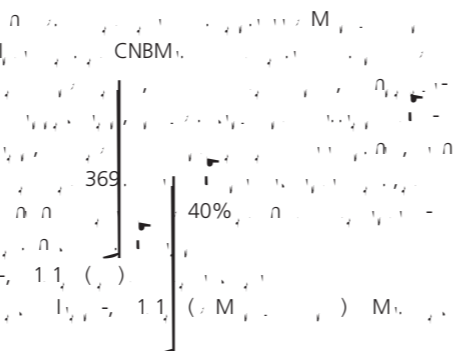
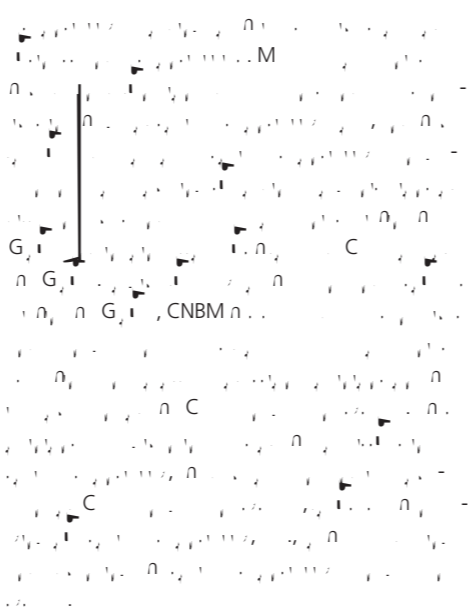
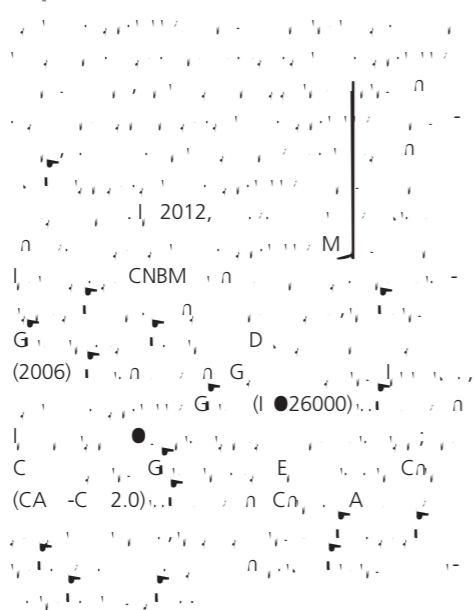
56

2012, 245

2009 年 CNBM 集团



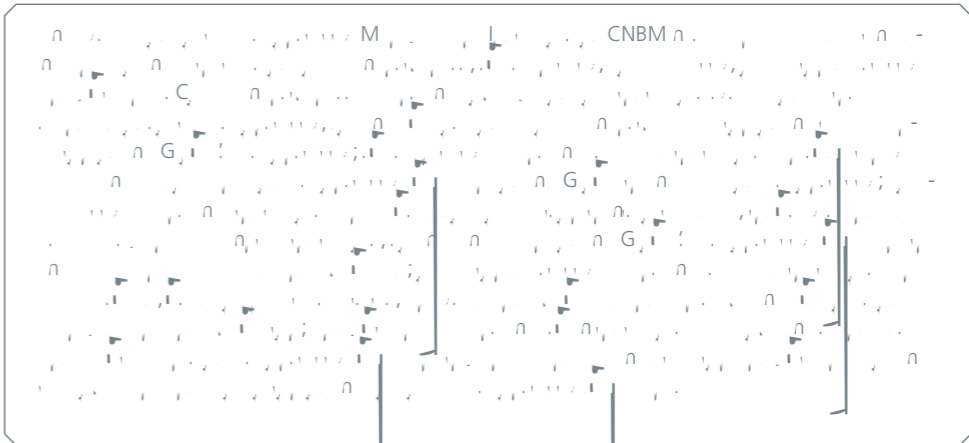
2012 年 CNBM 集团



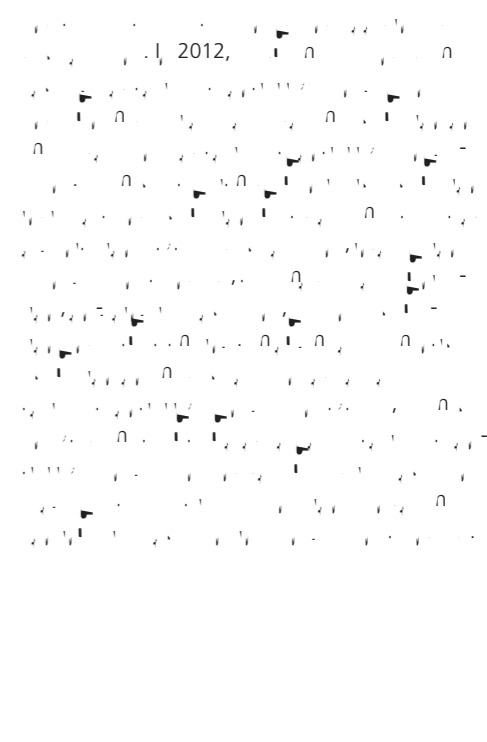
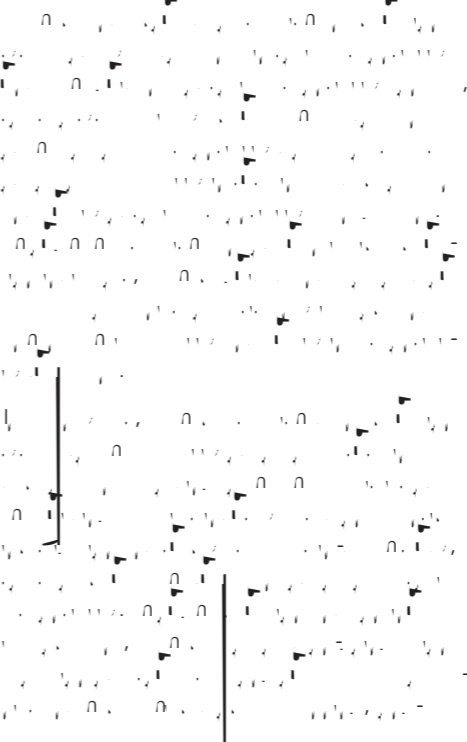
70

369

2012 年第 5 期



2012 年第 5 期



المجلس الأعلى للقضاء
المجلس الأعلى للقضاء
المجلس الأعلى للقضاء
المجلس الأعلى للقضاء

2012 年 12 月 11 日
C

2012 年 12 月 11 日
C
E
M

日期	事件	事件	事件
2012 年 12 月 11 日	C M E A	E C M	I E F
2012 年 12 月 11 日	F E	F B	C A B
2012 年 12 月 11 日	M D C	A C	A I B
2012 年 12 月 11 日	C M C D	E H D	H B B
2012 年 12 月 11 日	E E E	E C C D I	A E B I
2012 年 12 月 11 日	A D	E E	A I B
2012 年 12 月 11 日	A D	E E	A B

2012 年 12 月 11 日
CNBM
F
B

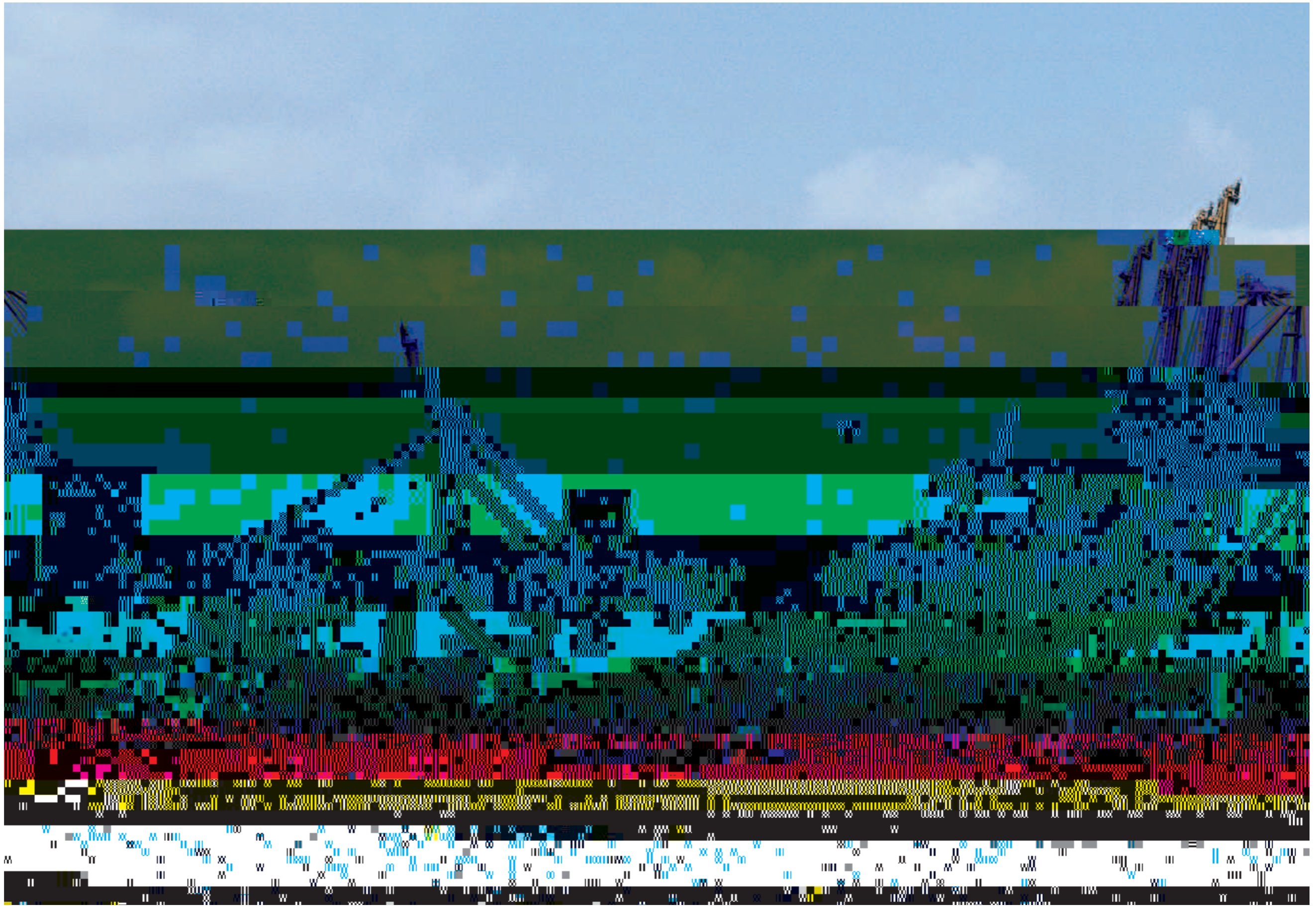
2 280
2012 年 12 月 11 日, 12,179

5 27
2012 年 4,016

2012 年 12 月 11 日, E
CNBM
G
A
G
G
G

2012 年 12 月 11 日
A C D

2012 年 12 月 11 日, A M C E
C M
A F E M
D A E



2012. C
 2012. G
 -C
 220
 20%
 30
 877%
 1.05
 20%
 3,507
 42%
 A,

MB2.8
 25%
 CNBM MB300.62
 45%; MB217.43
 12%
 MB11.16
 MB16.03
 \$7.0 MB11.16 .376-1.

()18(B11 B11) -23.563 D -1. B11

2012 年 1 月 1 日起施行的《企业会计准则第 2 号——长期股权投资》（以下简称“新准则”）对长期股权投资的核算方法进行了修订，要求对具有重大影响、共同控制或控制的长期股权投资采用权益法核算。这一变化对企业的财务报表产生了重要影响。

新准则实施后，企业需要根据持股比例和影响力来判断应采用何种核算方法。对于具有重大影响、共同控制或控制的长期股权投资，企业应采用权益法核算。这一变化要求企业更加准确地评估其在被投资单位中的影响力，并对财务报表进行相应调整。

2012 年 1 月 1 日起施行的《企业会计准则第 2 号——长期股权投资》（以下简称“新准则”）对长期股权投资的核算方法进行了修订，要求对具有重大影响、共同控制或控制的长期股权投资采用权益法核算。这一变化对企业的财务报表产生了重要影响。

新准则实施后，企业需要根据持股比例和影响力来判断应采用何种核算方法。对于具有重大影响、共同控制或控制的长期股权投资，企业应采用权益法核算。这一变化要求企业更加准确地评估其在被投资单位中的影响力，并对财务报表进行相应调整。

En
Ch

En
Ch

En
Ch

En
Ch
A
C
D

5 8
437
2012
2 57
12,463
2012

6
2012, 503

A
M
C
C
L

C
L
E
G
C
F
D
A

China Cement Industry

2602

15,901, 2012

27

MB16.03, 2012

7660

A, 62,559, 2012

China Cement Industry... 2012, CNBM... A, 62,559, 2012



Gao Yunhu, Deputy Director of the Raw Materials Division of the Ministry of Industry and Information Technology

CNBM has made great contribution to the development of the industry and the promotion of technology enhancement in the industry. CNBM is a role model for the building materials and other industries in terms of practice and experience in consolidation and restructuring, innovation and development model formation and management standardisation.

CNBM... 2012, CNBM... A, 62,559, 2012

China Cement Industry

Lei Qianzhi, Honourary President of China Cement Association

The cooperation between CNBM and the Conch Group has created the integration of resources among big enterprises in the industry. This is very significant, for it would further promote the restructuring and transformation of the building materials industry.

China Cement Industry... 2012, CNBM... A, 62,559, 2012

China Cement Industry

China Cement Industry... 2012, CNBM... A, 62,559, 2012

Cai Hongbin, Dean of Guanghua School of Management, Peking University

SOE reforms have been the core of the economic reforms of our country. It is also a huge social practice which involves millions of people. The "Market-oriented Operation of Central SOEs" concept, advocated by Song Zhiping, provides us a comprehensive solution. I believe that the key concepts of "Market-oriented Operation of Central SOEs" will be integral to the theoretical construction of SOE reforms.

China Cement Industry... 2012, CNBM... A, 62,559, 2012



Business
Development



Market
Research



Product
Development



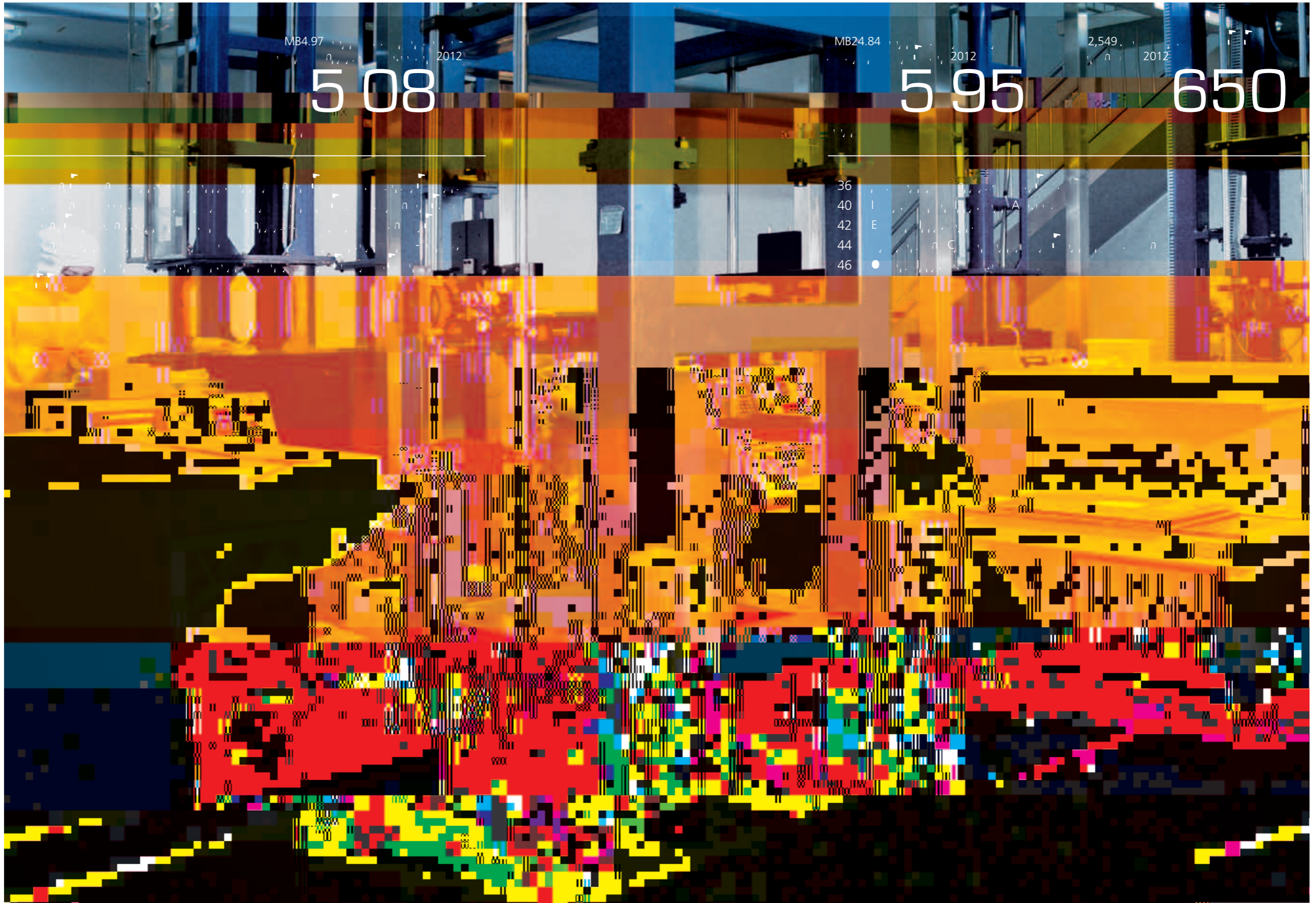
Production
Management



Quality
Control



Customer
Service



MB4.97
n
2012

MB24.84
n
2012

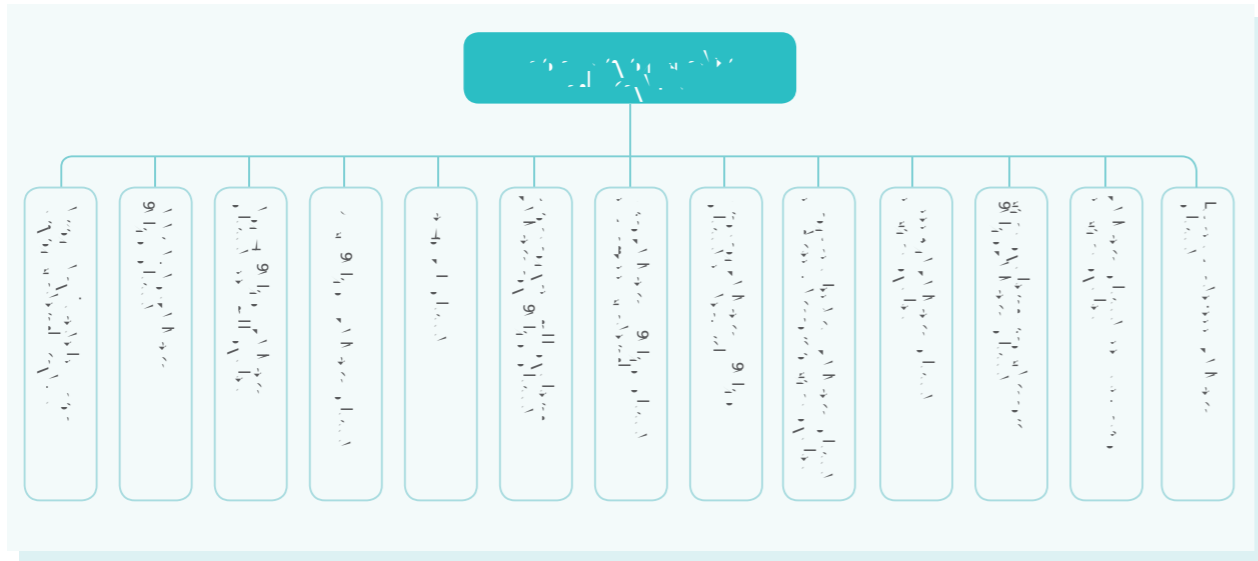
2,549
n
2012

5 08

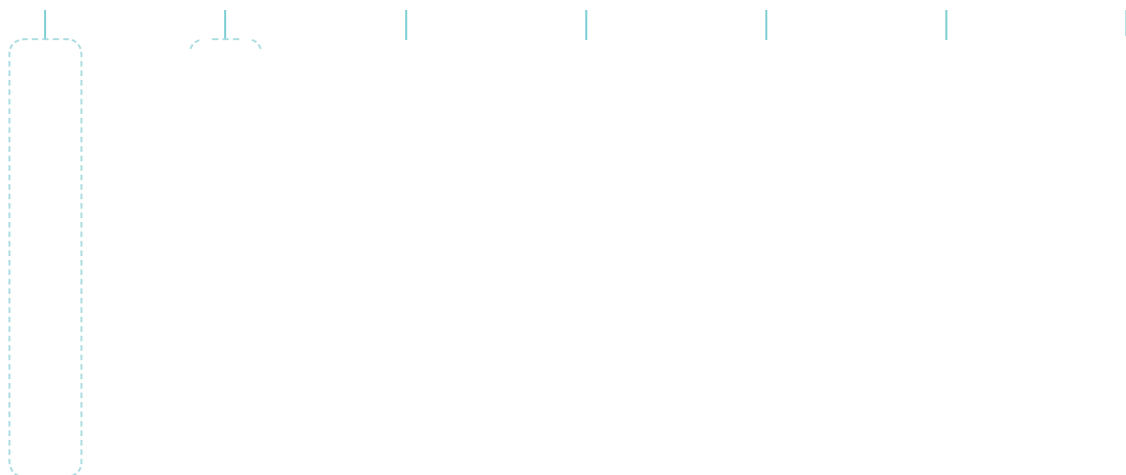
5 95

650

36
40
42
44
46



Handwritten text in a dotted box, possibly a sub-header or label for the diagram below.



I
A



2012, n

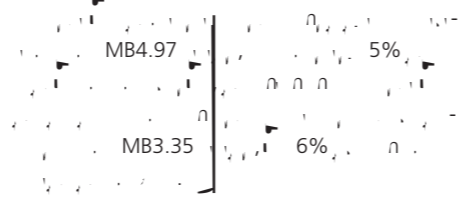
2012, n

2012, n

2012, n

2012, n

2012, n



2012, n

2012, n

2012, n



2012, n

2012, n

2012, n

2012, n

2012, n

2012, n

2012, n

2012, n

2012, n

2012, n

G

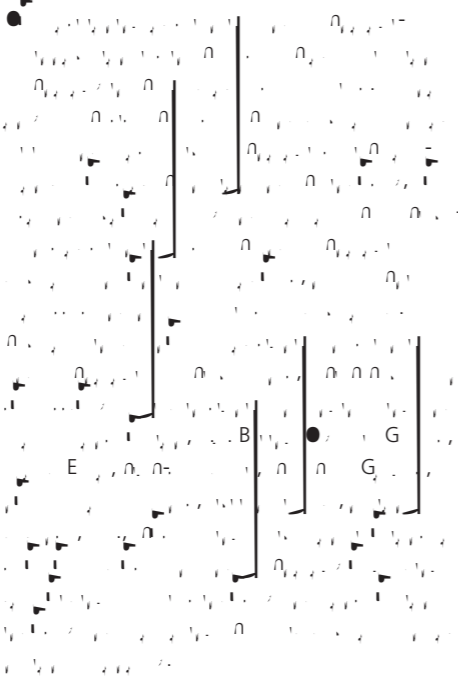


2012, n

2012 年 1 月 1 日

5.95

2012 年 1 月 1 日 MB24.84

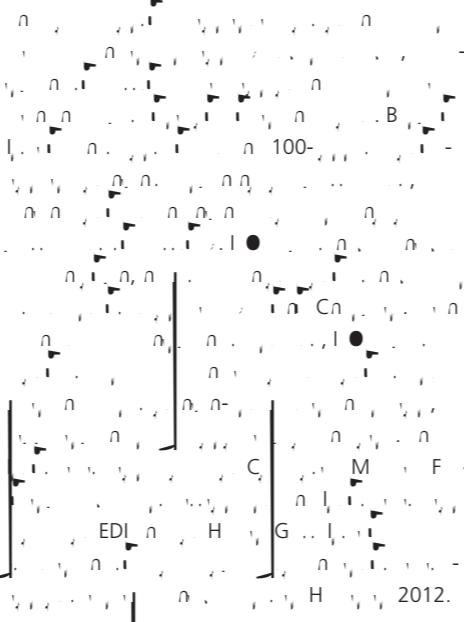
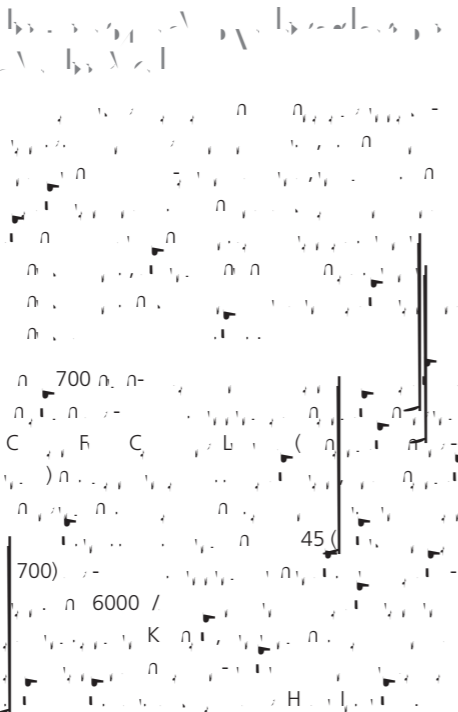


2012 年 1 月 1 日

2012 年 1 月 1 日

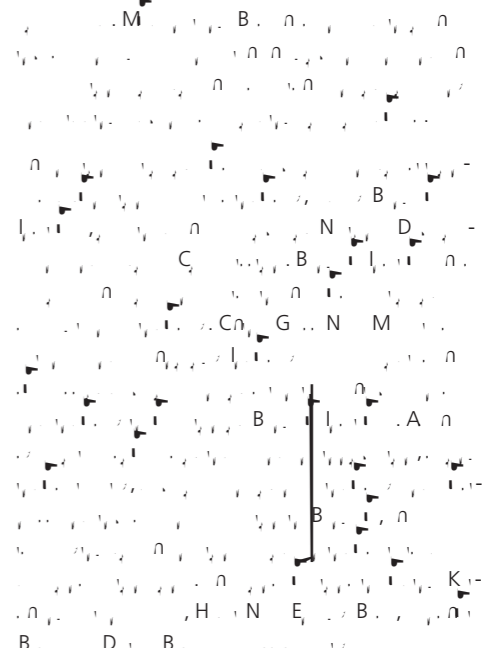
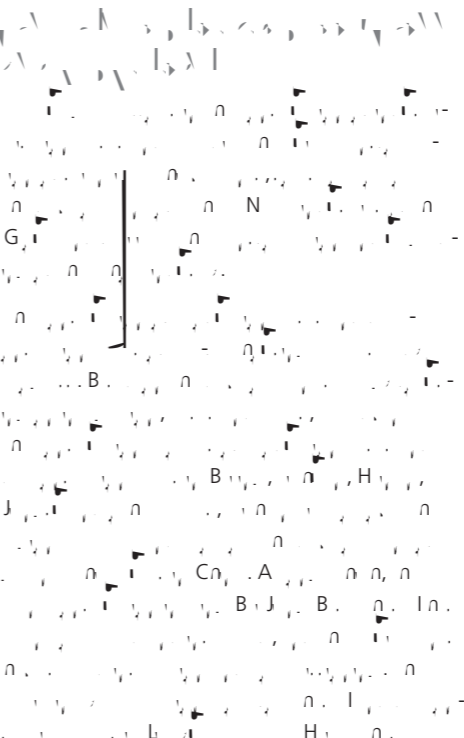
External Commendation: Xu Kuangdi, Vice Chairman of the National Committee of the 10th Chinese People's Political Consultative Conference and Honorary Chairman of the Chinese Academy of Engineering

High performance fiber, as an important strategic material in the nation, is widely used in the fields of high-end technology and industry. The enterprises must pay attention to the research of high performance carbon fiber, improve the properties as well as the international competitiveness of the products.



External commendation: Li Xueyong, Vice Secretary of Jiangsu Provincial Party Committee and the Governor of Jiangsu Province

The restructuring of CNBM and China Building Materials Academy is a combination of the best resources, which has realised the joint development of research and industry. In addition, the scientific innovation has promoted the transformation and upgrading of enterprises.



● 2012-2013

6

2012, 5

2

2012, 1

2012, 13074

2012, 13074

2012, 13074

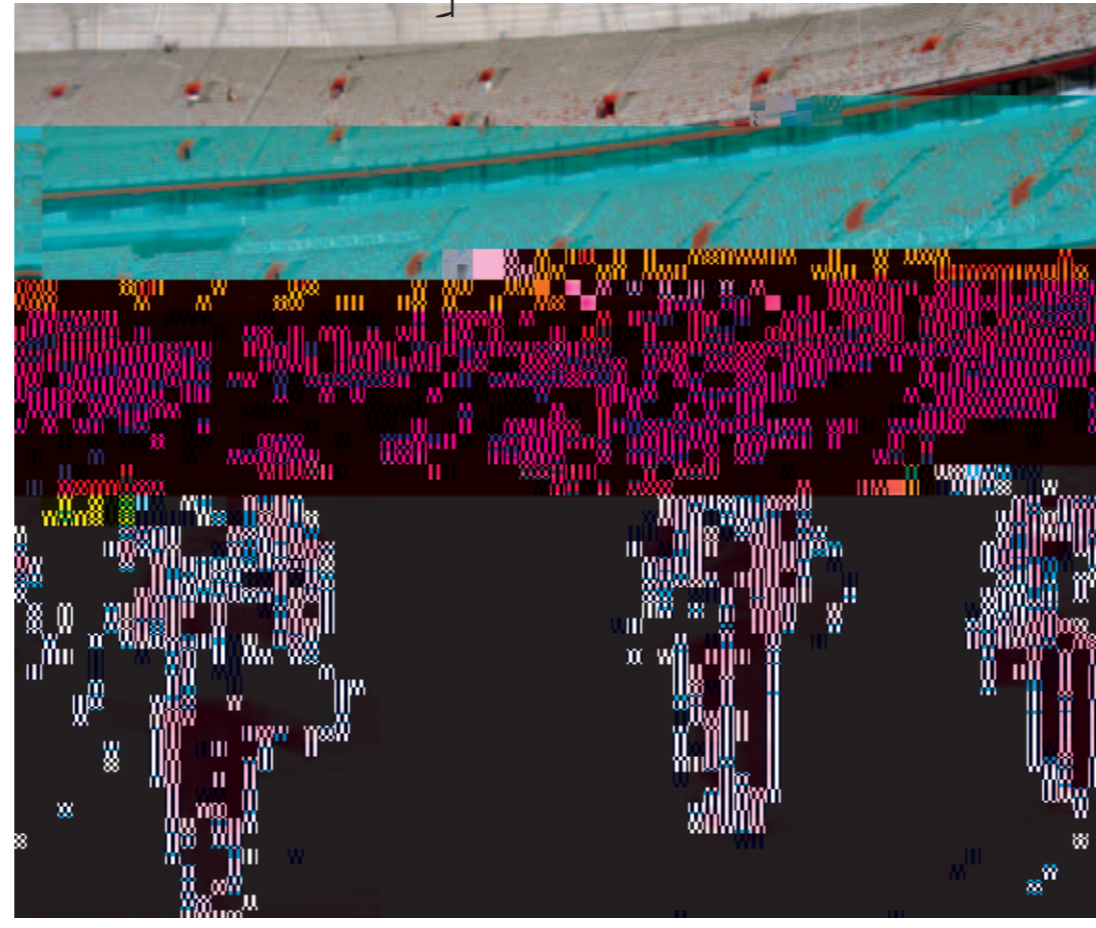
2012, 13074

2012, 13074

2012, 13074

2012, 13074

2012, 13074



2012, 13074

2012, 13074

2012, 13074

2012, 13074

2012, 13074

2012, 13074

2012, 13074

2012, 13074

505

494 2012

98 28

87,170 2012

Climate Change & Environmental

29

Environmental & Energy... 2012, MB1.08... 30%

Environmental & Energy... 2012, MB1.08... 30%

29

2012, MB1.08... 30%

2012, MB1.08... 30%



Environmental & Energy... 2012, MB1.08... 30%

2012, MB1.08... 100%

Environmental & Energy

Environmental & Energy... 2012, MB1.08... 100%

Environmental & Energy... 2012, MB1.08... 100%

Summary box with icons and text: A, B, C, D, E, F, G, H, I, J, K, L, M, N, O, P, Q, R, S, T, U, V, W, X, Y, Z

2012, MB1.08... 100%

Environmental & Energy... 2012, MB1.08... 100%

Environmental & Energy... 2012, MB1.08... 100%

E₁

7
 28
 17%

...



6
 25 CDM
 87
 CDM
 2.76

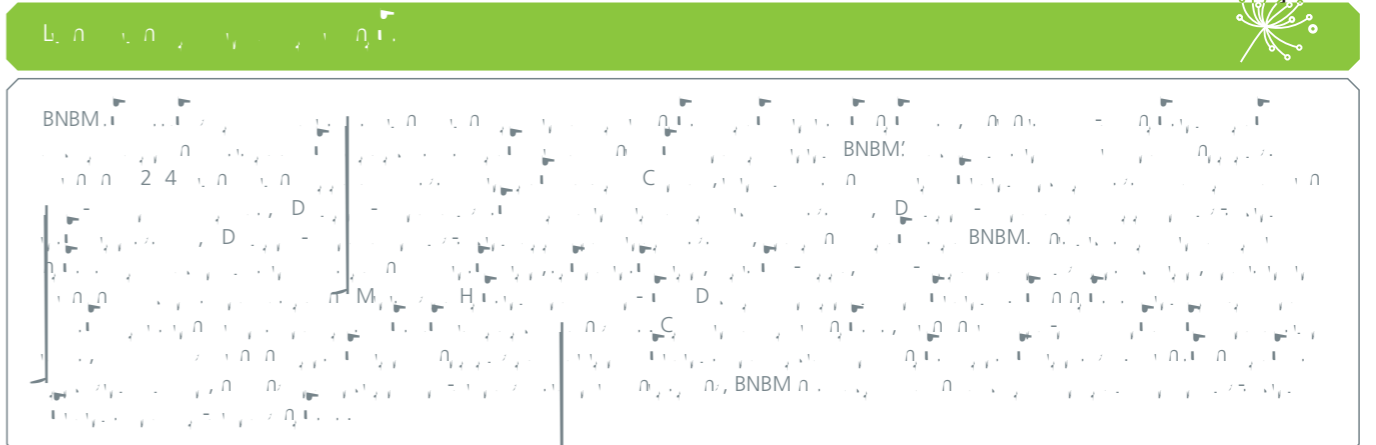
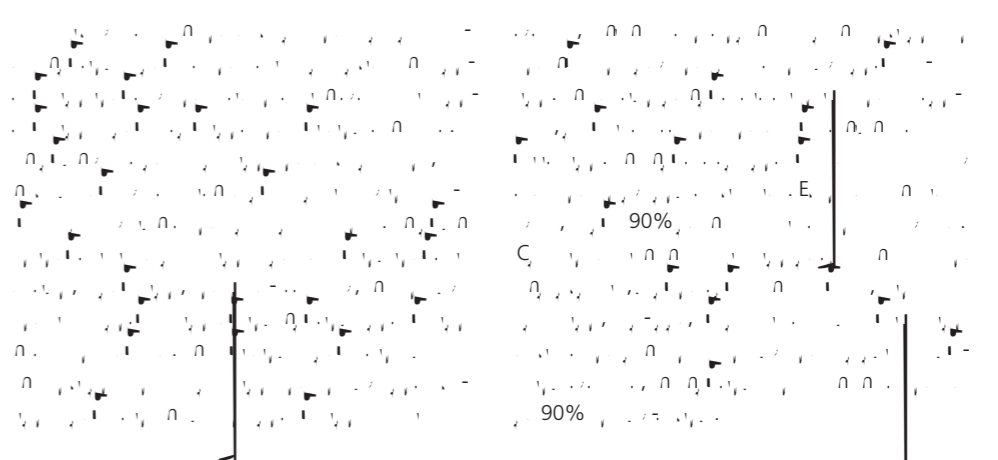
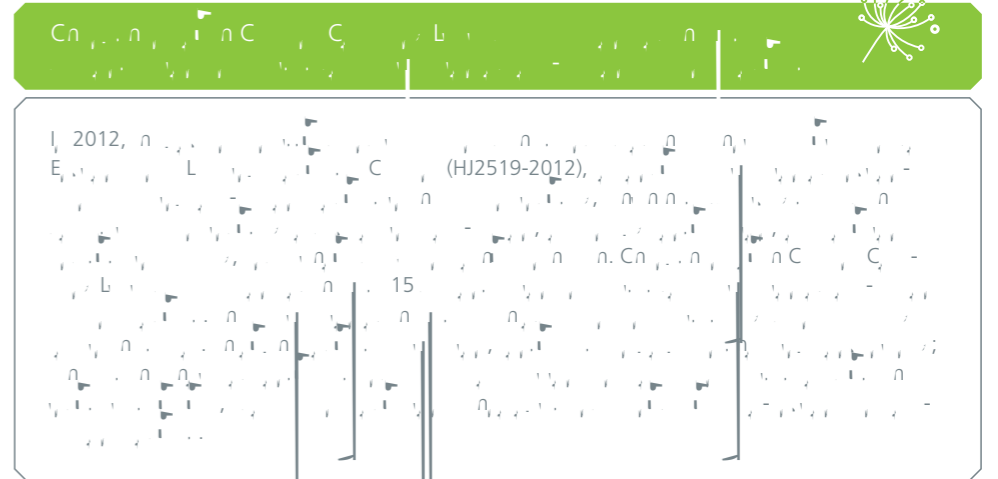
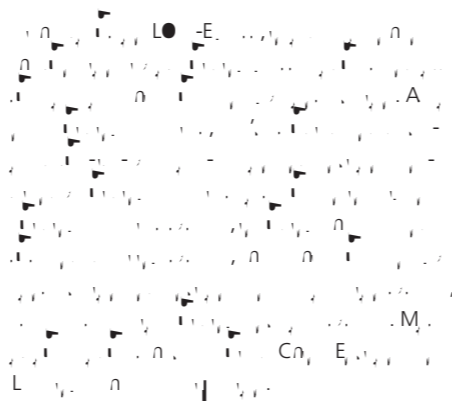
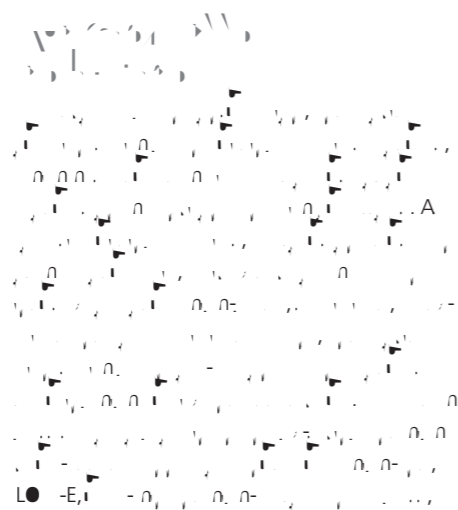
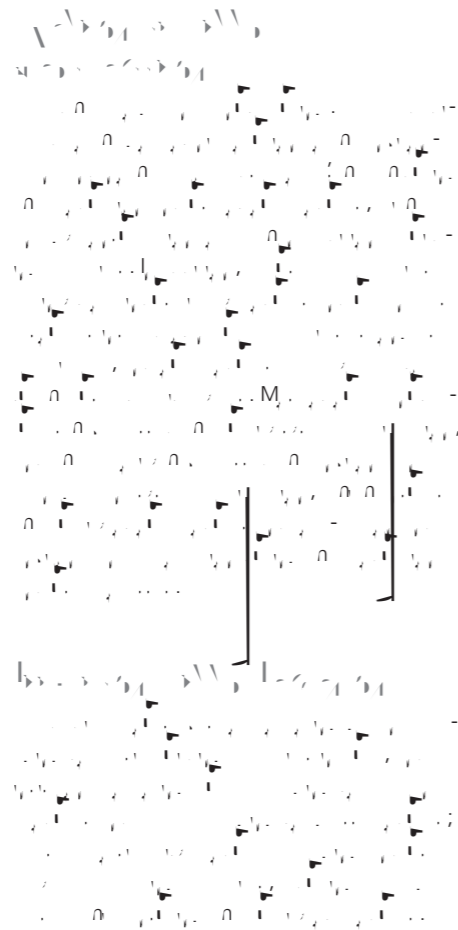
C₁ & C₂

...

F₁ & F₂

75

Energy Efficiency 64% 2012



Energy Efficiency & Energy Conservation

Energy Efficiency & Energy Conservation

Energy Efficiency & Energy Conservation

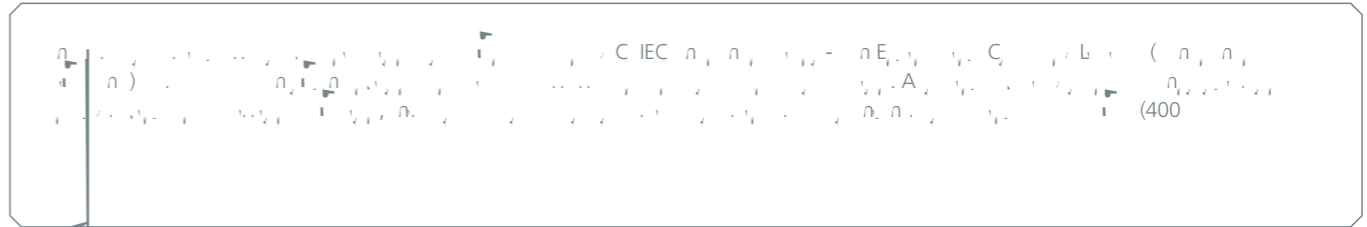
Against the odds of all-round challenges in the domestic wind power industry, Zhongfu Lianzhong still managed to realize export of its blades, which fully demonstrated its leading position and strength in the sector. The right thinking on development, rapid growth speed, constantly upgrading product-related technologies and materials, and rising competitiveness all point to the direction of its transformation and upgrade; Zhongfu Lianzhong is expected to achieve more and better performances ahead.

Against the odds of all-round challenges in the domestic wind power industry, Zhongfu Lianzhong still managed to realize export of its blades, which fully demonstrated its leading position and strength in the sector. The right thinking on development, rapid growth speed, constantly upgrading product-related technologies and materials, and rising competitiveness all point to the direction of its transformation and upgrade; Zhongfu Lianzhong is expected to achieve more and better performances ahead.

Against the odds of all-round challenges in the domestic wind power industry, Zhongfu Lianzhong still managed to realize export of its blades, which fully demonstrated its leading position and strength in the sector. The right thinking on development, rapid growth speed, constantly upgrading product-related technologies and materials, and rising competitiveness all point to the direction of its transformation and upgrade; Zhongfu Lianzhong is expected to achieve more and better performances ahead.

Li Xueyong, Deputy Secretary of the Provincial Party Committee and Governor of Jiangsu

"Against the odds of all-round challenges in the domestic wind power industry, Zhongfu Lianzhong still managed to realize export of its blades, which fully demonstrated its leading position and strength in the sector. The right thinking on development, rapid growth speed, constantly upgrading product-related technologies and materials, and rising competitiveness all point to the direction of its transformation and upgrade; Zhongfu Lianzhong is expected to achieve more and better performances ahead."



E C

W E
M

I D
M

Sun Huashan, vice director of State Administration of Work Safety

"As a central SOE and a pioneering enterprise in China's building materials industry, CNBM has set a good example in production safety, as it does an effective job in setting standardized safety procedures and participates in the drafting of safety standards for multiple industries like cement, glass and gypsum boards. It also propels itself to meet relevant standards and has achieved good results. CNBM helps to improve the safety standards in the building materials industry and sets a good example in the safety procedure standardization drive for China's manufacturing and trade enterprises."

... 2012, ... 8 A ... B ... M ... D ... C ... M ... 4 ... E ...

... 2012 ... 297 ... 186 ... 2012 ...

... G ... B ... E ... M ... G ... 2012, 57 ... G ... -1 ... A ... G ... M ... B ... N ... G ... -2 ... (...) ... 16 ...

... (●H A 18000) ...



... 2012 ...

... 2012 ...

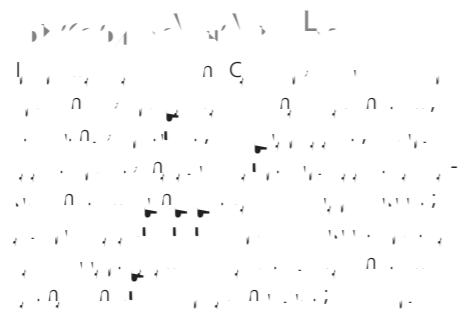
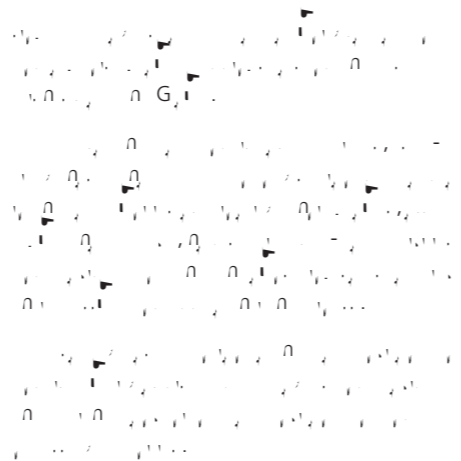
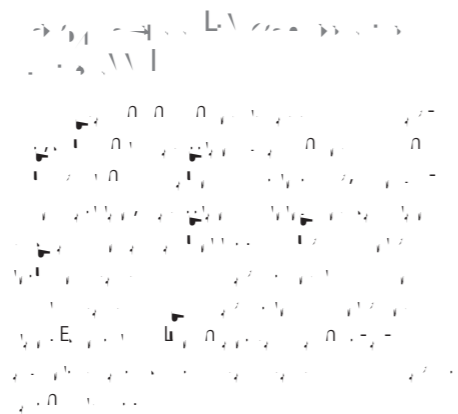
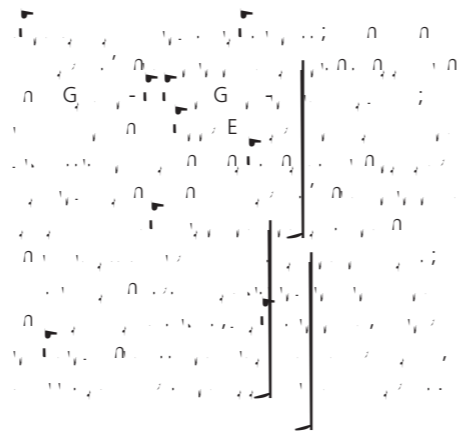
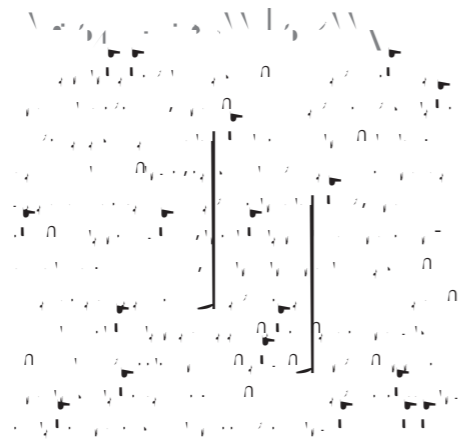
... 2012 ...

E

... 2012, ... N ... N ... Cn ... C ... C ... L ... C ... B ... C ... L ... R ... C ... C ... B ... G ...

E C

C H L E





2012: MB



2012: MB



2012: MB



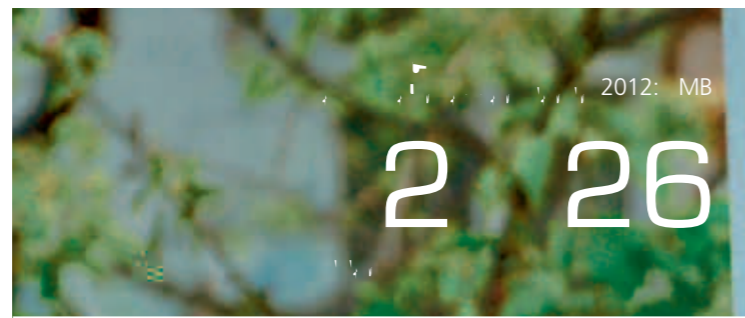
2012: MB



2012: MB



2012: MB



2012: MB

2 26

2012: MB



2012

66

2012

0 889

- 74 M... D... A... B...
- 76 C... A... B...
- 77 D... C... B...
- 78 I... A... B...
- 79 E... A... B...



M D A B

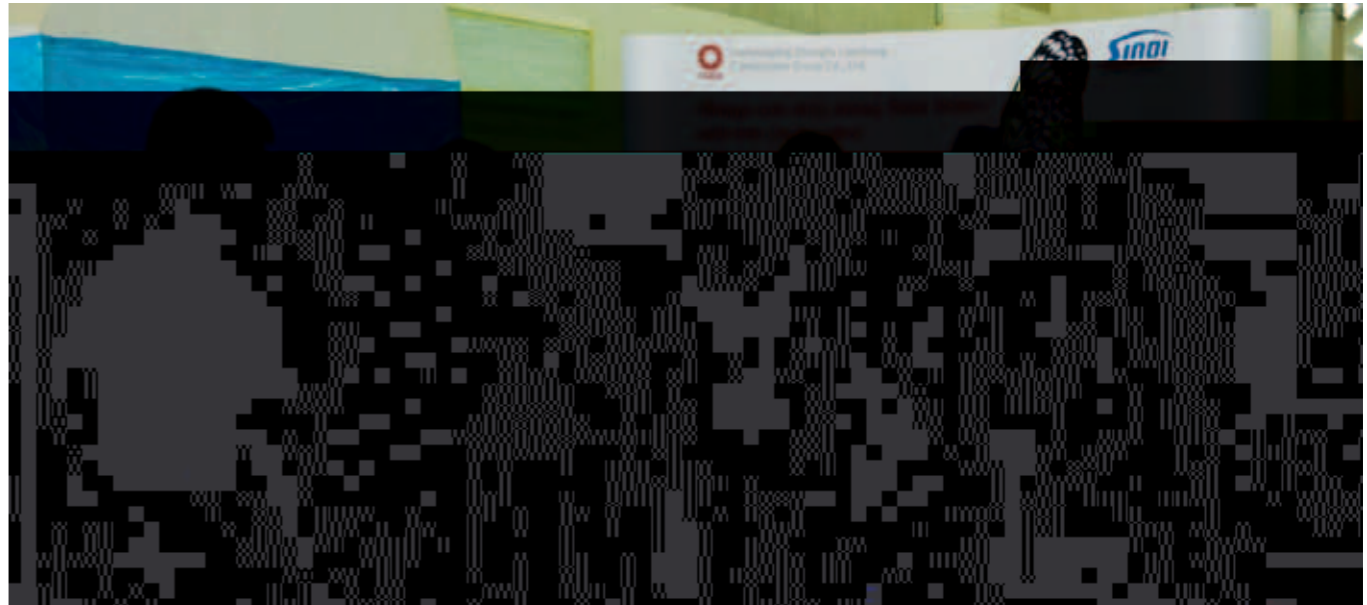
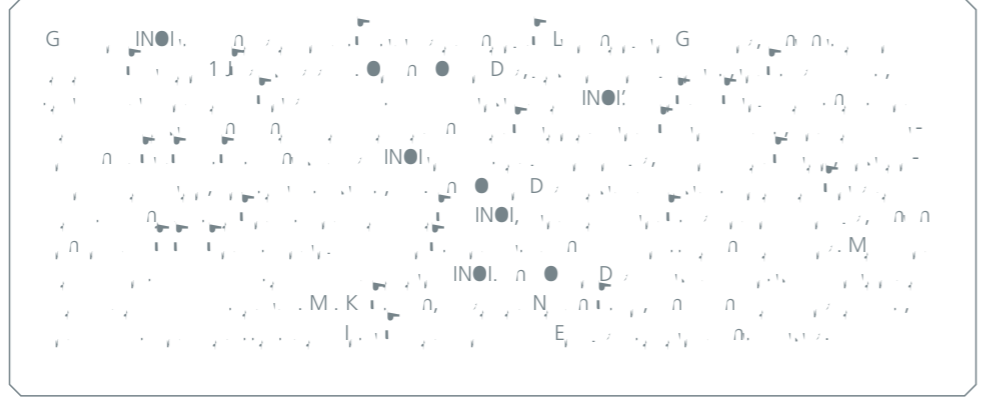


2012, 30

\$108.07

44

D G INOI



9

Zhang Dejiang, Vice Premier of the State Council

"The Central Committee of the Communist Party and the State Council put great emphasis on the work of poverty relief and development. CNBM's investment in and cooperation with Shizhu inject new impetus to the local economic development. Unlike poverty relief in the past, CNBM focuses on establishing industries and leaving real benefits through cooperation. CNBM needs to follow the law of market economy in conducting its business, developing industrial and other kinds of enterprises in Shizhu based on the local resources, the development strategy as a central enterprise and its own development strength, which could promote the development of Shizhu and the central enterprise at the same time."

B

96.9%

2012, 90%

2012 MB6.78

2012 H C

G & D C E A

D

C

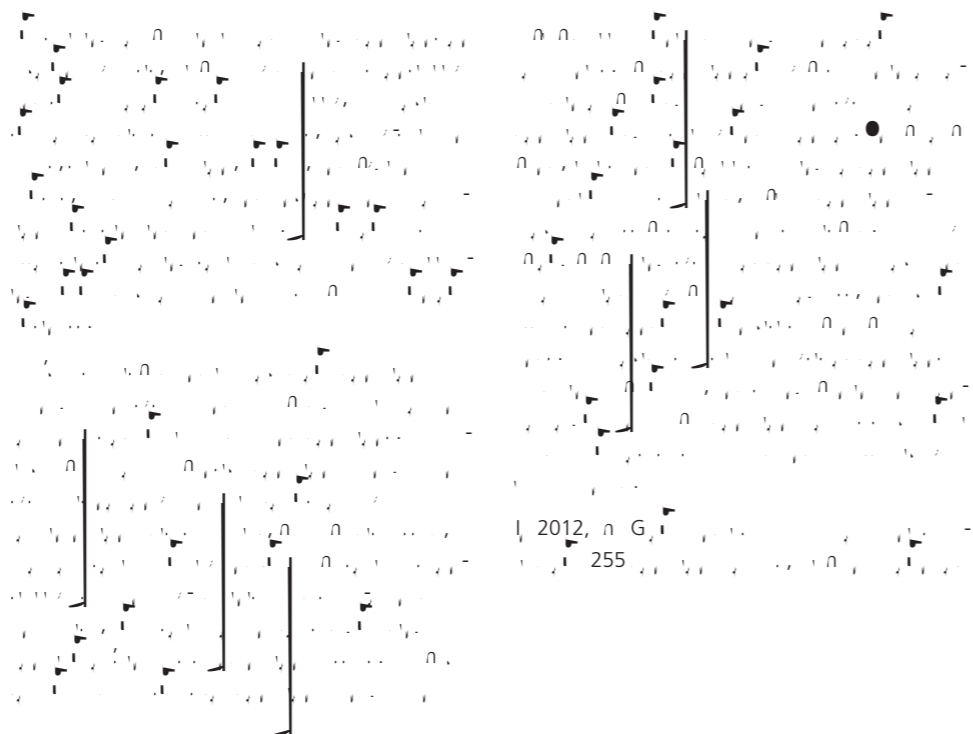
D

2 26

A MB10.15 2012

66

255 2012



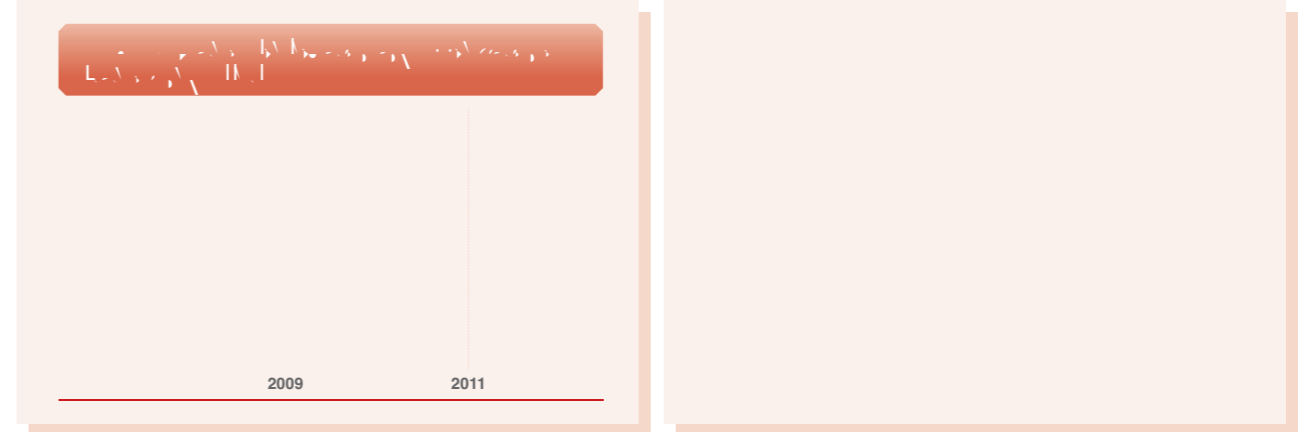


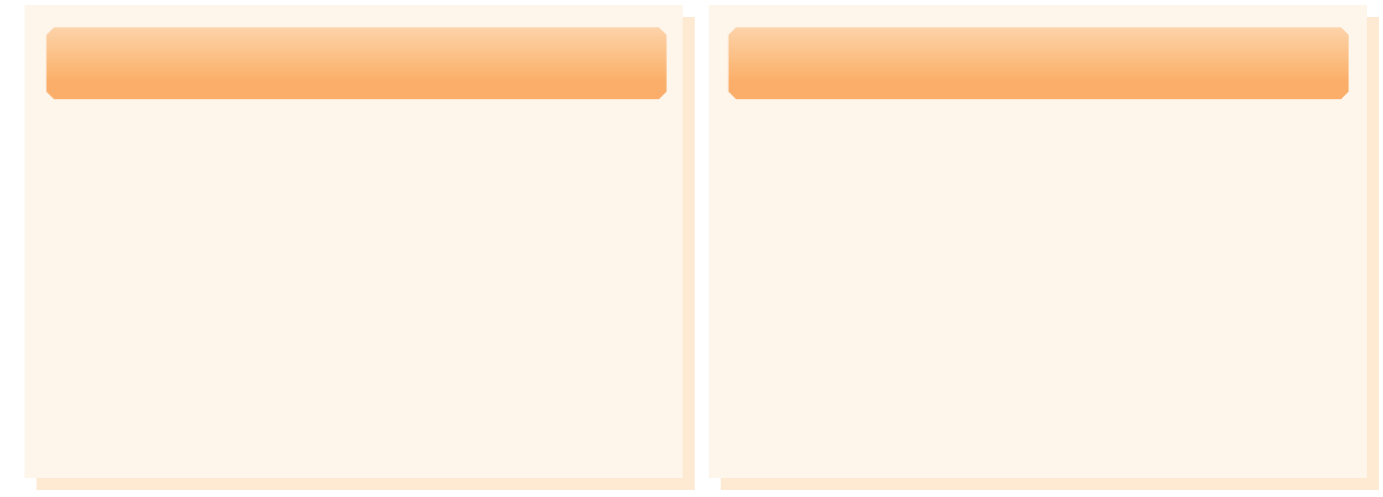
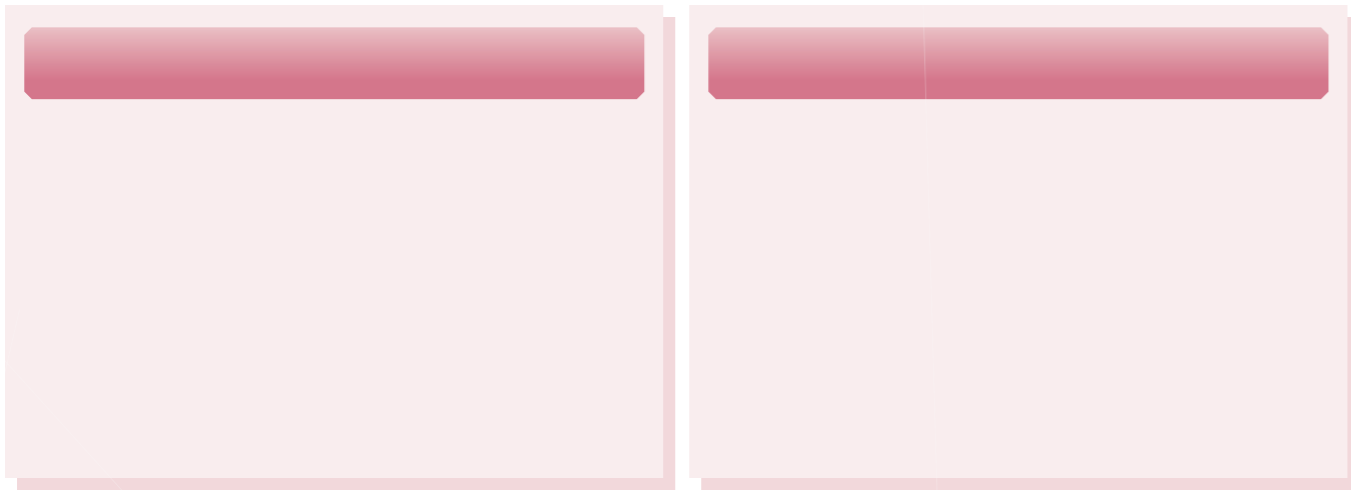
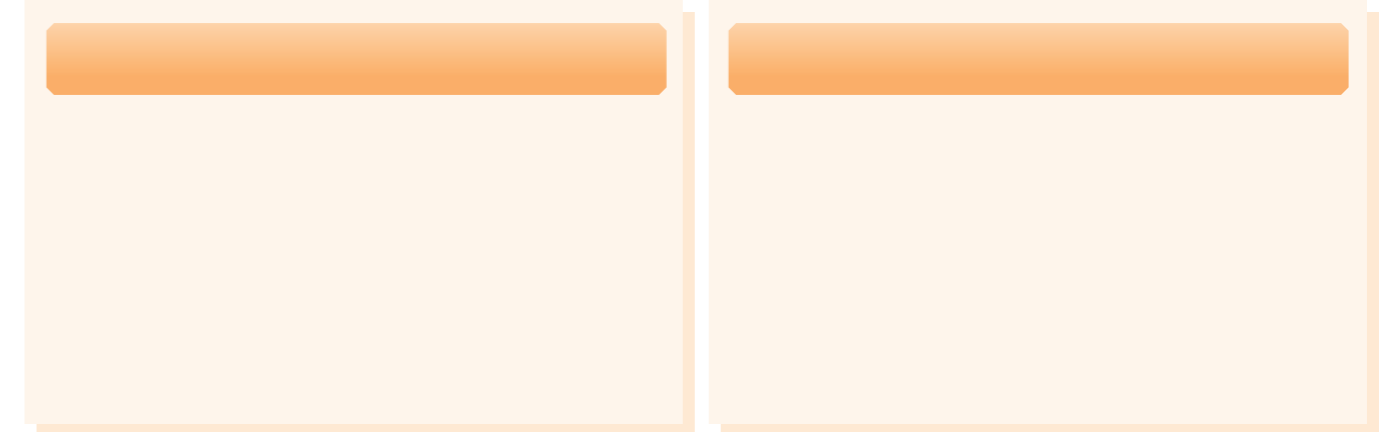
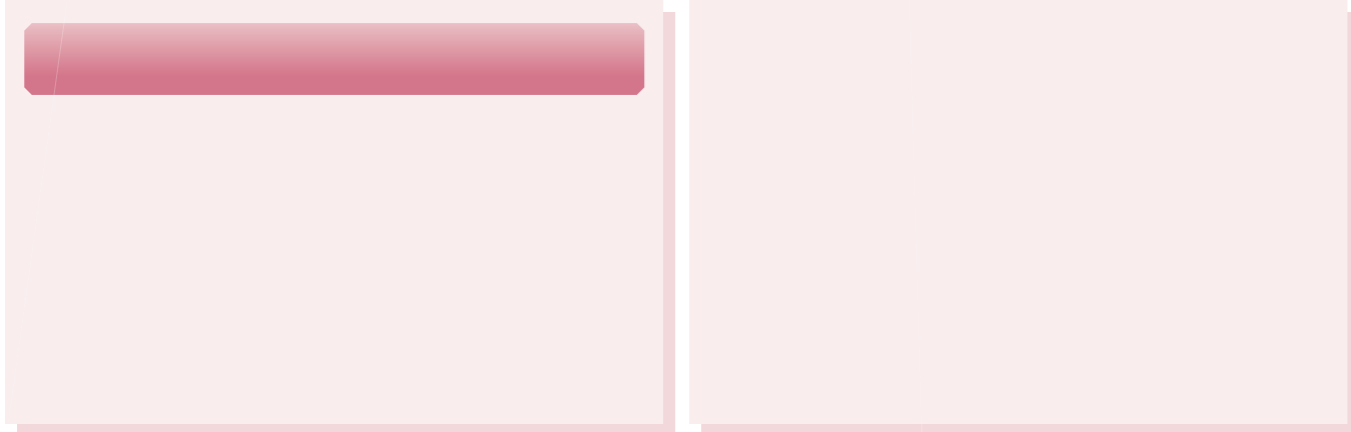
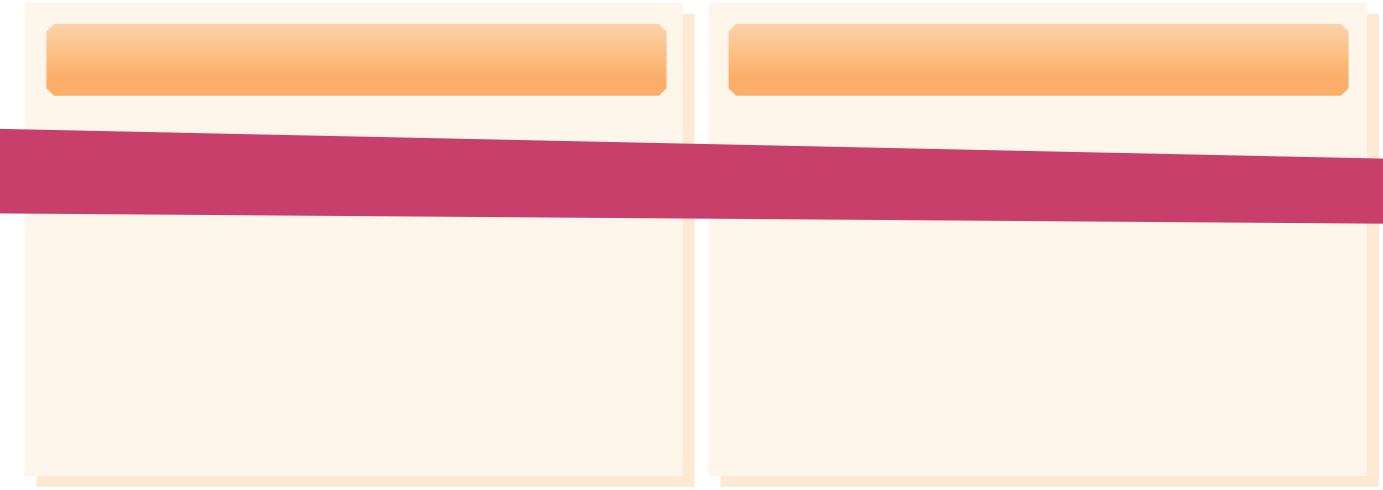
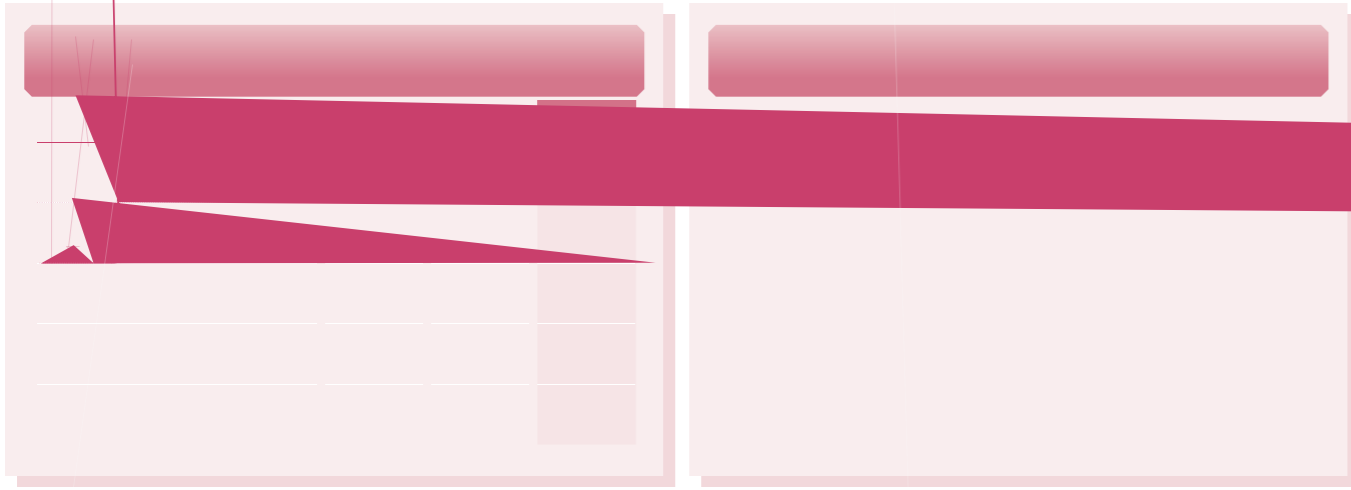
2013, n. 1, p. 10. A
Cn, D
A
E

2013, n. 1, p. 10. A
M
D
G

CNBM!
Cn, D
A

CNBM! Cn, D
Cn, D
Cn, D







D

2012 CNBM

2012 CNBM

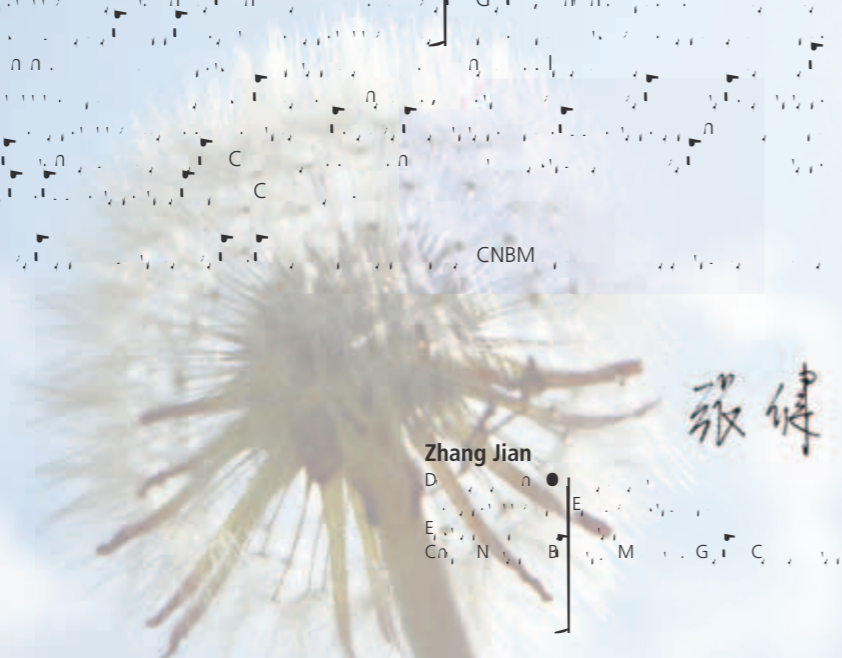
2012 MB217.4 MB11.2 MB16

2012 G

2012 G

2012 C

2012 CNBM



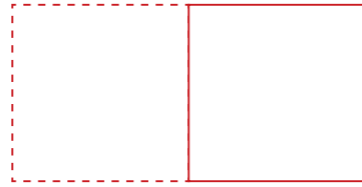
张健

Zhang Jian

D

E

C, N, B, M, G, C



Office of Social Responsibility and Energy Saving and Environmental Protection
China National Building Materials Group Corporation